



Leuvensesteenweg 587 , 3071 Kortenberg

**Phone number:** 02 759 96 53

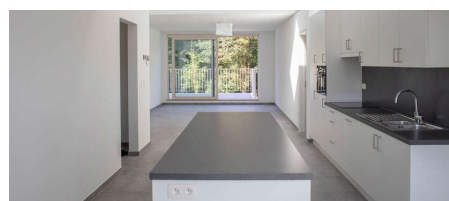
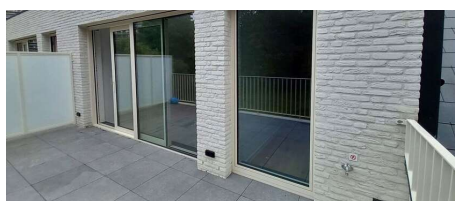
**E-mail:** info@immowillems.be

## For rent - Flat

**€ 1.950**

**Sint Lambertusstraat 123 B1.3, 1200 Woluwe-Saint-Lambert**

**Ref. 6113525**



Number of bedrooms: 3

Number of bathrooms: 2

Availability: tbd with the owner

Surf. Living: 117m<sup>2</sup>

Surf. terrace: 17m<sup>2</sup>

## Description

Superb energy-efficient new-build flat in the BLEEKWEIDE residence, near the Woluwe Shopping Centre. Public transport within walking distance, very fast connections. TOP LOCATION. 117m<sup>2</sup>, with spacious terrace and access to a common garden.

### HIGHLIGHTS OF THIS RESIDENCE:

- EPB Passive: NEV < 15 kwh/m<sup>2</sup>, EPC value LABEL A
- underfloor heating
- ventilation system: demand-controlled C-system natural supply, mechanical extraction
- green energy: air/water heat pump & solar panels
- triple glazing
- rainwater system (filtered) for toilets, washing machine and outdoor tap
- large enclosed communal bike shed with automatic door and remote control
- communal garden with direct access via back door
- Videophone

Book your visit to this top property quickly !

---

## Financial

Price: € 1.950,00 per month  
Available: Tbd with the owner

## Building

Habitable surface: 117,00 m<sup>2</sup>  
Fronts: 2  
State: New

## Comfort

Furnished: No  
Elevator: Yes

## Energy

EPC class: A

## Layout

Terrace: 17,00 m<sup>2</sup>

## Parking

Parkings inside: Yes